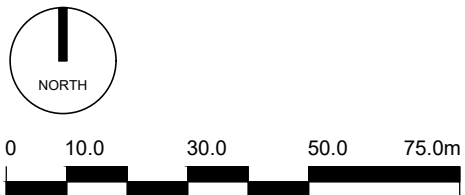


# Appendix 1

1 Location Plan  
1:1250



The copyright of this drawing is vested with Corstorphine & Wright Ltd and must not be copied or reproduced without the consent of the company.

Rev.	Description	Date	Drw.	Chk.
P-00	Planning issue	10.05.23	IH	LC

Base plan based on information provided by St Mowden's.

Client  
LSP Developments Ltd.

Project  
New Local Centre  
Kingsgrove, Wantage

Drawing Title  
Location Plan

Drawing Status  
PLANNING

## Corstorphine & Wright

Tamworth Studio  
5 Aldergate, Tamworth, B79 7DJ  
01827 671 23

corstorphine-wright.com

Drawing No. 22616-0201				Revision P-00
Drawn NM	Checked LC	Paper Size A3	Scale 1:1250	Date 20.03.23

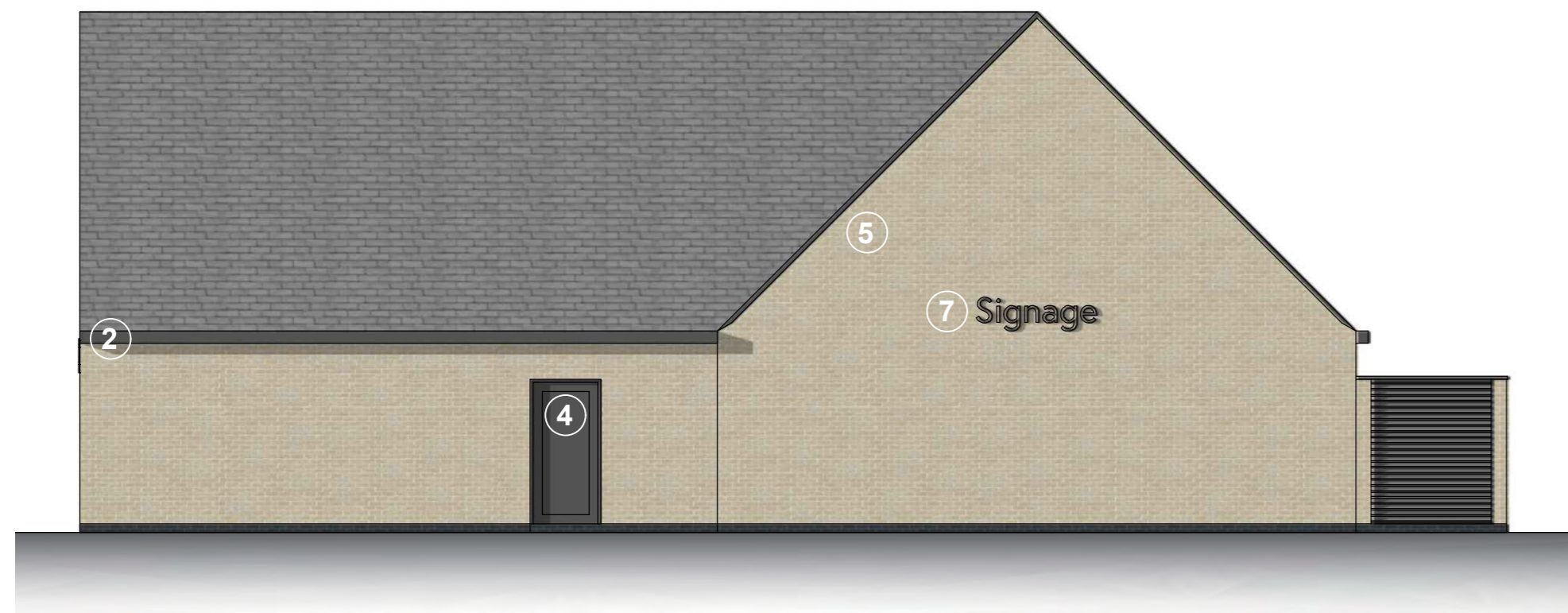




1 South Elevation  
1:100



2 East Elevation  
1:100



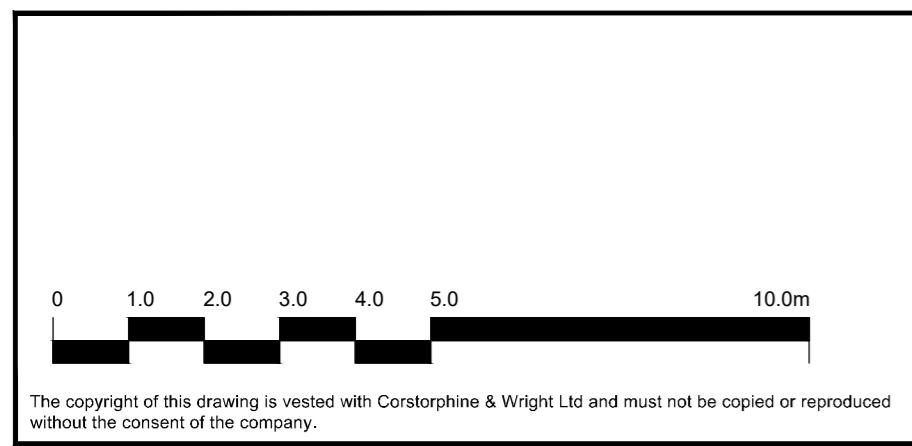
3 North Elevation  
1:100



4 West Elevation  
1:100

Key	
①	SLATE EFFECT TILED PITCHED ROOF, COLOUR TBC
②	RAINWATER GOODS SQUARE SECTION POLYESTER POWDER COATED ALUMINIUM, (RAL 7016).
③	POLYESTER POWDER COATED ALUMINIUM FRAME GLAZED SHOP FRONT, (RAL 7043).
④	POLYESTER POWDER COATED ALUMINIUM SERVICE DOORS, (RAL 7043).
⑤	FACING BRICKWORK
⑥	INDICATIVE SIGNAGE ZONE ON TIMBER EFFECT CLADDING
⑦	INDICATIVE SIGNAGE
⑧	LOUVRE FENCE
⑨	INDICATIVE PV PANEL LAYOUT

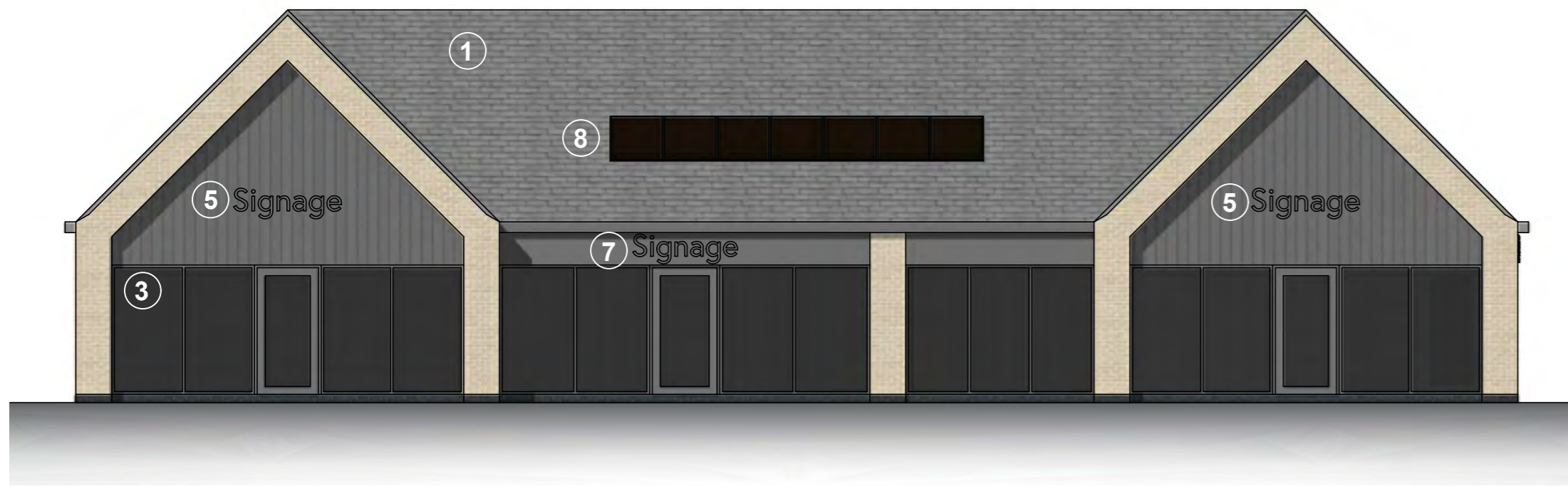
Appendix 2



Rev.	Description	Date	Drw.	Chk.
P-01	Convenience Store access revised based on end user comments	17.07.23	LC	IH
P-00	Planning issue	10.05.23	IH	LC

Client LSP Developments Ltd.		<b>Corstorphine &amp; Wright</b>	
Project New Local Centre. Kingsgrove, Wantage			
Drawing Title Proposed Elevations Retail Unit 4 Convenience Store		Tamworth Studio 5 Aldergate, Tamworth, B79 7DJ 01827 671 23 corstorphine-wright.com	
Drawing Status Planning		Drawing No. 22616-0410	
Drawn NM	Checked LC	Paper Size A2	Scale 1:100
			Revision P-01
			Date 20.03.23

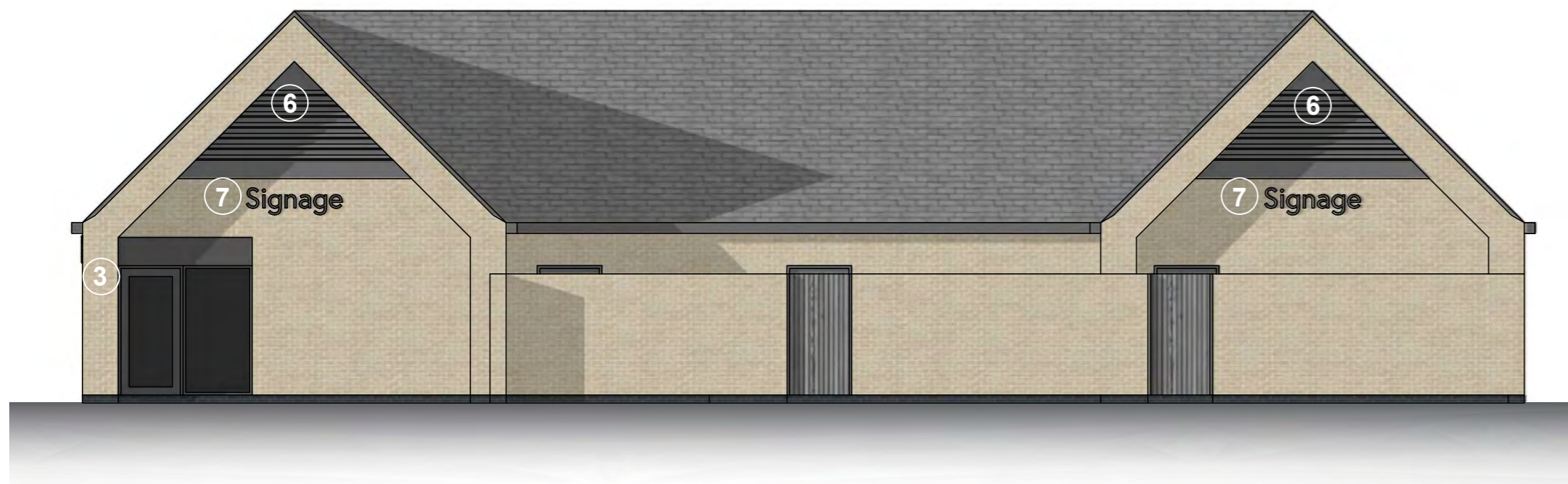




1 South Elevation  
1:100



2 East Elevation  
1:100

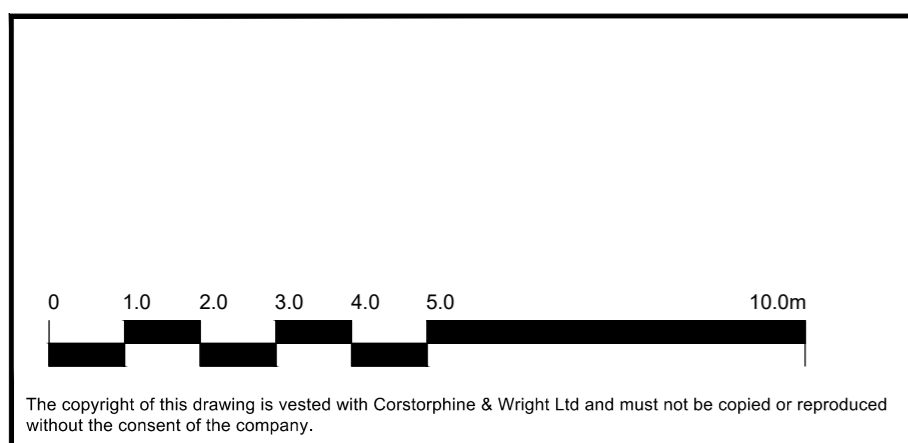


3 North Elevation  
1:100



4 West Elevation  
1:100

Key	
1	SLATE EFFECT TILED PITCHED ROOF, COLOUR TBC
2	RAINWATER GOODS SQUARE SECTION POLYESTER POWDER COATED ALUMINIUM, (RAL 7016).
3	POLYESTER POWDER COATED ALUMINIUM FRAME GLAZED SHOP FRONT, (RAL 7043).
4	FACING BRICKWORK TO LPA APPROVAL
5	INDICATIVE SIGNAGE ZONE ON TIMBER EFFECT CLADDING
6	LOUVRES TO SERVICE AREA
7	INDICATIVE SIGNAGE ZONES
8	INDICATIVE PV PANEL LAYOUT



Rev.	Description	Date	Drw.	Chk.
P-00	Planning issue	10.05.23	IH	LC

Client LSP Developments Ltd.		<b>Corstorphine &amp; Wright</b>	
Project New Local Centre. Kingsgrove, Wantage			
Drawing Title Proposed Elevations Ancillary Retail Units 2-4		Tamworth Studio 5 Aldergate, Tamworth, B79 7DJ 01827 671 23 corstorphine-wright.com	
Drawing Status Planning		Drawing No. 22616-0420	
		Revision P-00	
Drawn NM	Checked LC	Paper Size A2	Scale 1:100
		Date 20.03.23	





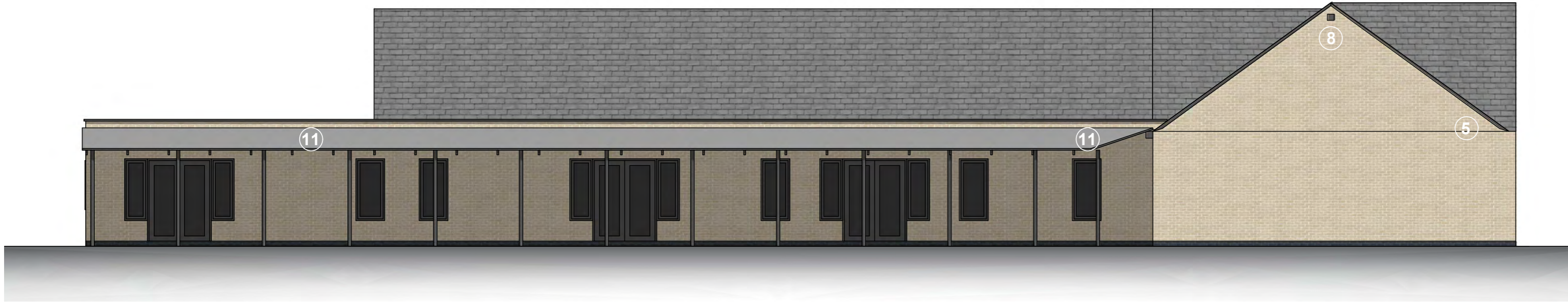
1 South Elevation  
1:100



2 North Elevation  
1:100



3 East Elevation  
1:100



4 West Elevation  
1:100

Key	
1	SLATE EFFECT TILED PITCHED ROOF, COLOUR TBC
2	RAINWATER GOODS SQUARE SECTION POLYESTER POWDER COATED ALUMINIUM, (RAL 7043).
3	POLYESTER POWDER COATED ALUMINIUM FRAME GLAZED SHOP FRONT, (RAL 7043).
4	POLYESTER POWDER COATED ALUMINIUM SERVICE DOORS, (RAL 7016).
5	FACING BRICKWORK TO LPA APPROVAL
6	INDICATIVE SIGNAGE ZONE ON TIMBER EFFECT CLADDING
7	BAT BOX AS PER THE OUTLINE LEMP
8	BIRD BOX AS PER THE OUTLINE LEMP
9	FLAT ROOF TO SERVICE AREA TO LPA APPROVAL
10	INDICATIVE PV PANEL LAYOUT
11	LEAN-TO CANOPY WITH METAL ROOF PANELS

The copyright of this drawing is vested with Corstorphine & Wright Ltd and must not be copied or reproduced without the consent of the company.

P-00 Planning issue		10.05.23	IH	LC
Rev.	Description	Date	Drw.	Chk.

Client  
LSP Developments Ltd.

Project  
New Local Centre.  
Kingsgrove, Wantage

Drawing Title  
Proposed Elevations  
Nursery

Drawing Status  
**PLANNING**

**Corstorphine & Wright**

Tamworth Studio  
5 Aldergate, Tamworth, B79 7DJ  
01827 671 23  
corstorphine-wright.com

Drawing No. 22616-0430			Revision P-00
Drawn NM	Checked LC	Paper Size A2	Scale 1:100
Date 23.03.23			





**Key**

- Pedestrian Block Paving
- Vehicular Grade Block Paving
- Vehicular grade tarmac surface
- Soft Landscaping Works to LA Approval - see landscape architect proposals for details
- 2.0m close boarded timber fence
- Timber knee rail
- Existing weldmesh fence
- 1.8 m brick boundary wall as part of adjacent housing development
- Retaining wall to engineers details with 2m close boarded timber fence on top

1 Proposed Site Plan  
1:200

0 2.0 4.0 6.0 8.0 10.0 20.0m

NB. Landscaping is indicative only, please see separate landscape plans for details.

Rev	Description	Date	Drw	Chk
P-05	Additional cycle stands added	14.08.23	LC	IH
P-04	Retaining wall with close boarded timber fence shown to Nursery garden	21.07.23	LC	IH
P-03	Convenience Store access revised based on end user comments	17.07.23	LC	IH
P-02	Plans updated based on comments from St Mowdens	18.05.23	LC	IH
P-01	Fencing types noted	11.05.23	IH	LC
P-00	Planning issue	09.05.23	IH	LC

Client  
LSP Developments Ltd.

Project  
New Local Centre  
Kingsgrove, Wantage

Drawing Title  
Proposed Site Plan

Drawing No.  
22616-2001

Drawing Status  
Planning

**Corstorphine & Wright**

Tamworth Studio  
5 Aldergate, Tamworth, B79 7DJ  
01827 671 23  
corstorphine-wright.com

Drawn	Checked	Paper Size	Scale	Date	Revision
LC	IH	A1	1:200	09.05.23	P-05